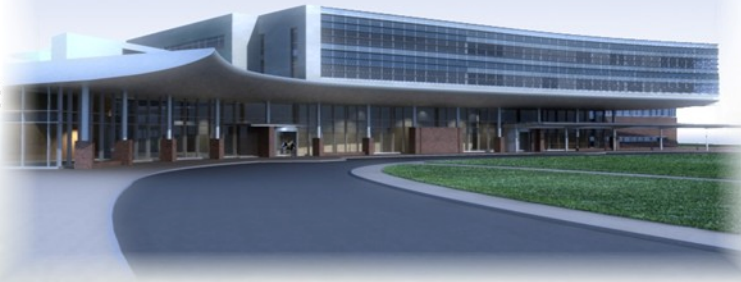


C A N C E R I N S T I T U T E

Chris Voros
Construction Management



Hershey, PA
Penn State Milton S. Hershey
Medical Center

<http://www.arche.psu.edu/thesis/eportfolio/2007/portfolios/CAV138/>

Project Team:

Owner- Penn State Milton S. Hershey Medical Center
Owner's Consultant- Centerline Associates
Architect- Payette Associates, Inc.
Associate Architect- Array Health Facilities Solutions
Structural/ Civil Engineer- Gannett Fleming
MEP Engineer- Bard, Rao + Athanas
CM Agency- Gilbane Building Company
General Contractor- Wohlsen Construction

Basic Project Information:

- 5-story, 175,000 square foot facility
- Design-Bid-Build, CM Agency Delivery
- Project Cost- \$82,000,000
- Duration- October 2006- December 2008
- Function- Cancer treatment and research
- LEED Silver Rating

Design / Architecture:

- Ties in to existing hospital, requiring relocation of Emergency Delivery area
- Design is coordinated with current Parking Garage project and future adjoining Children's Hospital
- Radiotherapy equipment located in basement, with patient housing, teaching and research areas located on upper floors
- Glazed aluminum curtain wall facade, aluminum-clad skylights, and glass canopy covering front entrance
- Open-air "Healing Garden" between hospital connections to aid in patient recovery

Structural System:

- Grade beams and column piers atop micropile foundation system
- 6" Slab-on-Grade, 36" SOG for radiotherapy area
- Steel bay construction with elevated concrete floor slabs on composite metal decking
- Bituminous asphalt roofing with EPDM membrane

Mechanical / Electrical Systems:

- Mechanical penthouse stores two 55,000 cfm AHU's, with a third 130,000 cfm AHU on the ground floor, servicing 400 CV and VAV boxes
- Electrical system is 3 Phase, 480 V / 270 V supplied by a 15kV feeder from the campus
- Emergency supply through a 450 kW, 562.5 kVA natural gas powered generator on the penthouse



PENNSTATE



Milton S. Hershey Medical Center
College of Medicine

PAYETTE

ARRAY
healthcare facilities solutions



Gannett Fleming

BR+A

CENTERLINE
ASSOCIATES

Gilbane

WOHLSEN